

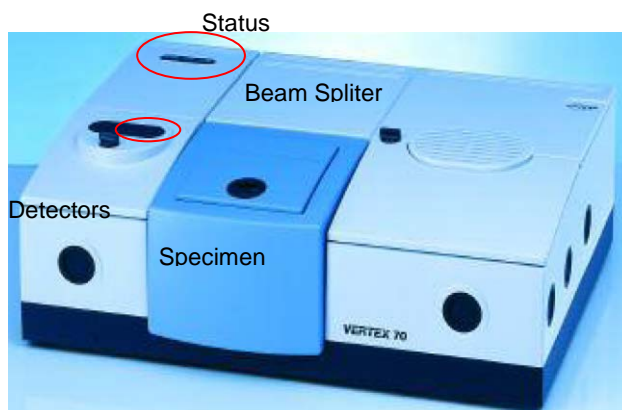
# Guide to Operating the Bruker FT-IR Microscope

## I. Basic Spectrum Acquisition with Vertex 70

Susheng Tan, Ph.D.


NanoScale Fabrication and Characterization Facility, University of Pittsburgh  
 SB60 Benedum Hall, 3700 O'Hara St., Pittsburgh, PA 15261  
 Office: M104 Benedum Hall, Phone: (412) 383-5978, Email: sut6@pitt.edu

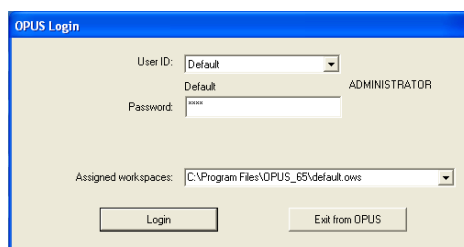
1. Log on your reserved session online with FOM on any networked computer.
2. Open the N<sub>2</sub> inlet valve to purge the Vertex 70 spectrometer for 15 – 20 minutes



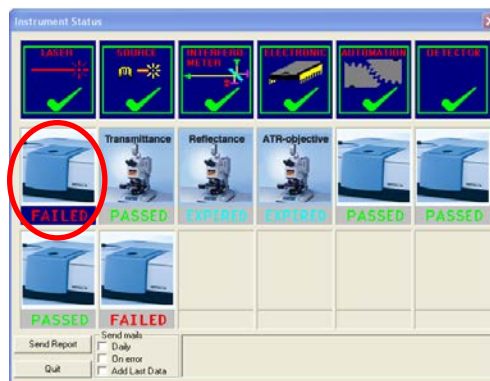
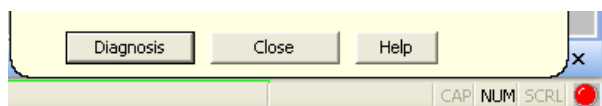
3. fill LN<sub>2</sub> into the Dewar of the MCT-A detector (~2 full funnels of LN<sub>2</sub>)
4. Turn on the Vertex 70 spectrometer
5. check the Humidity, Laser, and Status on Vertex 70 spectrometer and make sure the LED lights are green



6. Start the OPUS software, . In the Login dialog box, select **Default** as the *User ID* and enter **OPUS** as the *password*




7. on the **About OPUS** window click **OK** to open the OPUS interface
8. If the startup test failed, click the diagnosis button or the red dot at the right bottom corner of OPUS interface

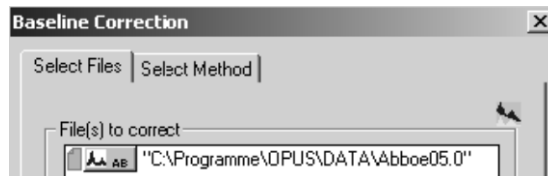


- a. Double click the **Failed** as indicated and Run **PQ** test for **Failed** (skip the last Failed one)

- b. Click **Quit** to exit the successful diagnosis window
9. Spectrum Acquisition
  - a. From the menu, select **Measure -->Routine Measurement** or **Advanced Measurement**
  - b. Make necessary changes of the Measurement Parameters
    - i. On **Basic** tab: type your **Sample description** and **Sample form**
    - ii. On **Advanced** tab:
      - 1) Load an appropriate *Experiment* ( e.g. *c:\data\default\_Experiment\_XPM\Basic-FT-IR-Transmission-MIR.XPM*)
      - 2) Type your *File name*, and select the correct data *Path*
      - 3) Set *Resolution*: 4 cm<sup>-1</sup>
      - 4) Sample scan time: 16 Scans
      - 5) Background scan time: 16 Scans
      - 6) Save data from 400 cm<sup>-1</sup> to 4000 cm<sup>-1</sup> (**MCT-A detector: 12,000-600 cm<sup>-1</sup>; DLATGS: 12,000-350 cm<sup>-1</sup>; FIR FLATGS: 700-10 cm<sup>-1</sup>. KBr broadband splitter: 10,000-400cm<sup>-1</sup>; Multilayer splitter: 680-30 cm<sup>-1</sup>**)
      - 7) Result spectrum: Transmittance
      - 8) Data blocks to be saved: Transmittance; Single Channel; Background
    - iii. Optics tab:
      - 1) Aperture setting: 1.5 mm
      - 2) Accessory: Any
      - 3) Measurement channel: Sample Compartment
      - 4) Background meas. Channel: Sample compartment
      - 5) Detector setting: **LN-MCT Mid [internal pos. 2]**
    - iv. Acquisition tab (*usually do not have to be changed*):
    - v. FT tab (*usually can leave them unchanged*):
    - vi. Beam Path tab: make sure the beam path is right for your measurement
    - vii. Check Signal tab:
      - 1) check the *Interferogram* option
      - 2) move the *scan range* arrow buttons to find the peak
      - 3) make sure the Amplitude is 20,000 – 30,000
      - 4) click **Save Peak Position**
  - c. Background and Sample Measurement
    - i. To start the background measurement, select the **Basic** tab and click on the **Background Single Channel** button.
    - ii. After **Background Measurement** is done, load your sample into the **Vertex 70** sample chamber
    - iii. Click **Sample Single Channel** on the **Basic** tab
    - iv. On the basis of this single-channel spectrum and the background spectrum measured, a resulting transmission spectrum will be calculated and displayed in the spectrum window.

10. Baseline Correction (*optional. The key is the sample preparation!*):


- a. start either from the **Manipulate** menu or by clicking on the  icon
- b. drag-and-drop the spectrum block from the OPUS browser to the File to Correct field



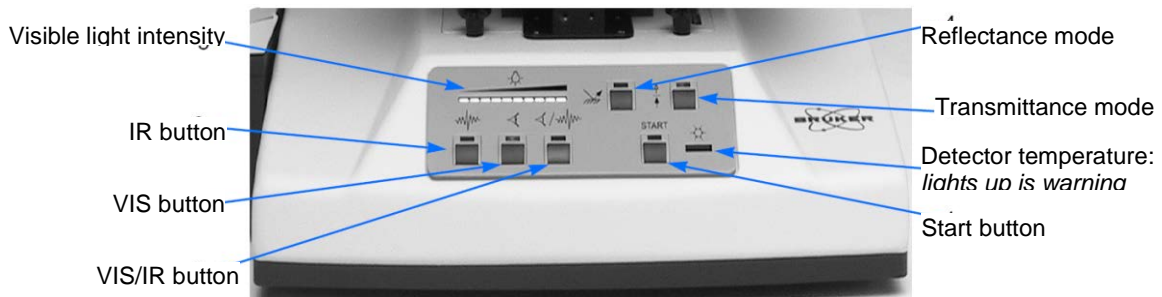
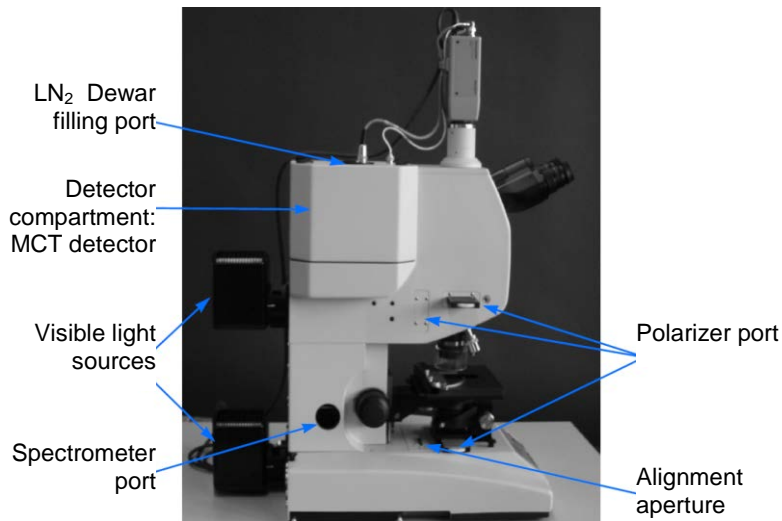
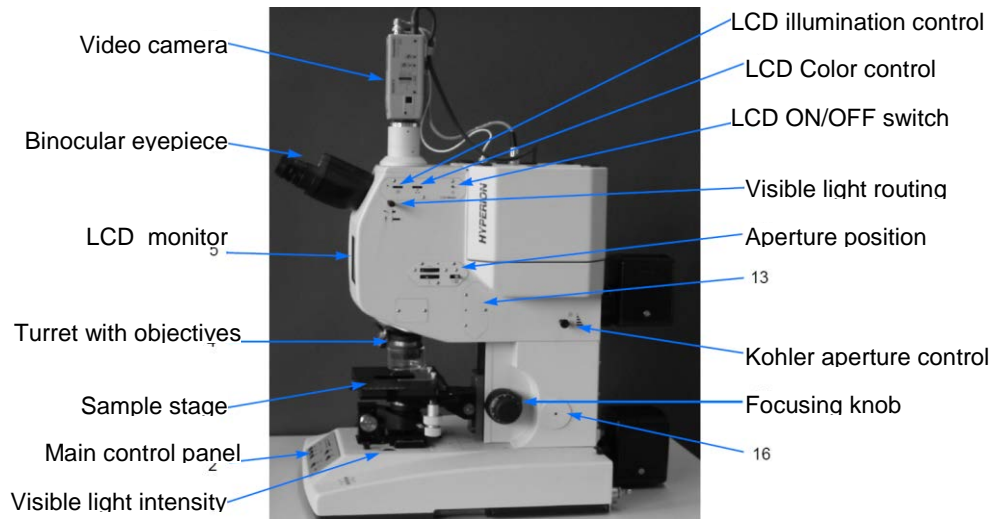
- c. click on the **Select Method** tab and define a particular baseline correction method (*optional*)
- d. click on the **Correct** button to start the baseline correction

11. Peak Picking:

- a. Open the FT-IR file you want to evaluate and make the optional manipulations


- b. From the menu, select **Evaluation > Peak Picking**, or click the  button.
  - c. click **Interactive Peak Picking** button to start peak picking
  - d. Click on the **Store** button to save the currently displayed peak position values. Thereupon, a PEAK data block is added to the spectrum file in the OPUS browser.
12. Save Spectra:
- a. The original spectrum is automatically saved in the path which you have defined
  - b. The spectrum or modified spectrum can be saved as a different file using **Save File As** command
  - c. The file is normally saved in OPUS format. However, the *Mode* and *Data Point Table* tabs allow to save the file in JCAMP-DX format, as a plain X-Y data table, in Pirouette (DAT) or in GALACTIC format (SPC)
13. Shut Down:
- a. Exit the OPUS program.
  - b. Turn off the power of the **Vertex 70** spectrometer.
  - c. Close the N2 gas.
  - d. Sign off the instrument online with FOM.

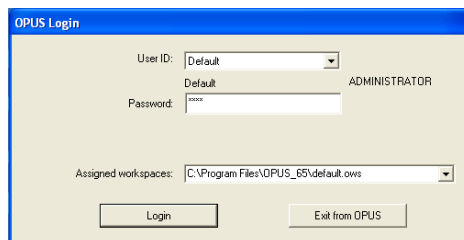
## II. Spectrum Acquisition with Hyperion 2000 Microscope



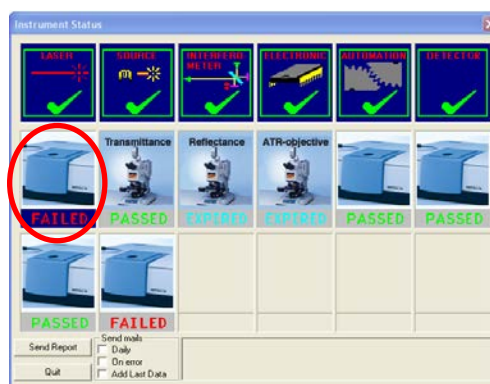
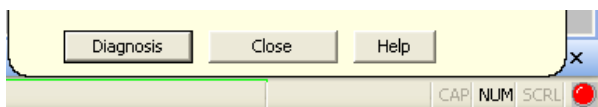
### I. Getting Started

1. Open the N<sub>2</sub> inlet valve to purge the **Vertex 70** spectrometer for 15 – 20 minutes
2. Turn on the **Vertex 70** spectrometer
3. Fill LN<sub>2</sub> into the Dewar of the **MCT-A** detector (~2 full funnels of LN<sub>2</sub>)
4. Fill LN<sub>2</sub> into the Dewar of the **HYPERION 2000** microscope
5. Turn on the **Hyperion 2000** microscope

6. Turn on the **LCD** video monitor
7. check the **Humidity, Laser, and Status** on **Vertex 70** spectrometer and make sure the LED lights are green
8. Start the **OPUS** software, . In the **Login** dialog box, select **Default** as the *User ID* and enter **OPUS** as the *password*



9. on the **About OPUS** window click **OK** to open the OPUS interface
10. If the startup test failed, click the diagnosis button or the **red** dot at the right bottom corner of OPUS interface

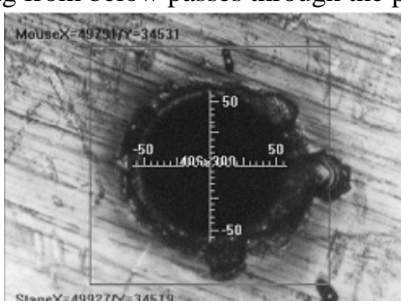


- a. Click the **Failed** as indicated and Run **PQ test for Failed** (*skip the last Failed one*)
- b. After a successful diagnosis, click **Quit** to exit. Otherwise, ask NFCF staff for help!

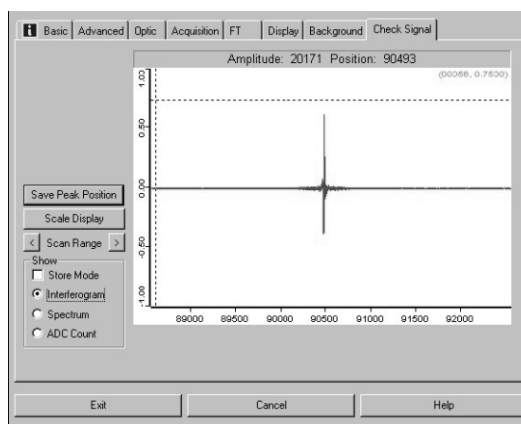
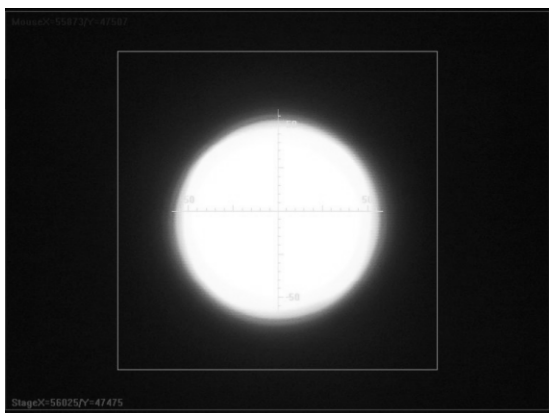
## II. Checking the Signal Intensity

(Steps 1-6 are optional. Alternatively use the knife edges to limit the field of view.)

1. Put the *pinhole* on the stage. Ensure that the light coming from below passes through the pinhole.



2. Press the **VIS** button and the *reflectance* mode button on the control panel.
3. Adjust the stage height using the focusing control until you see a sharp image of the pinhole metal surface.
4. While looking through the binocular eyepiece or observing the video image on the LCD move the pinhole on the stage to align the hole with the crosshair.
5. Press the *transmittance* mode button on the main control panel. The result will be a bright and sharp image with the light passing through the pinhole.
6. A blurred image can be caused by an incorrect stage height or an improper light intensity. Adjust the stage height and optimize the light intensity.



7. Press the **IR** button on the main control panel.
8. Select **Advanced Measurement** in the OPUS menu **Measure**.
9. Load the desired **Experiment** profile (e.g. **c:\data\default\_Experiment\_XPM\Basic-FTIR-Hyperion- MIR.XPM**).
10. Click on the **Check signal** tab to check the **interferogram** maximum (Typically between 8,000 and 15,000).

### III. Measurement in Transmittance Mode (thin samples < 50µm)

1. Press the **VIS** button on the control panel.
2. Put the sample on the stage. Ensure that the IR light coming from below can pass through the sample. If the microtome cut or the fibre is big enough use a metal plate with a very small hole (included in the delivery) and put the sample across the hole. It is recommend not to cover the hole completely with the sample but to leave some hole area uncovered for the reference measurement using the predefined aperture size. If the sample is minuscule and fragile put it on a window material (e.g. KBr) used as substrate. For samples containing water use CaF<sub>2</sub>-window material. (The cutoff of CaF<sub>2</sub>-window material is 900cm<sup>-1</sup>.)
3. Choose an appropriate aperture size corresponding to the desired measurement area.
4. For the reference measurement move the metal plate or substrate to a sample-free area. Ensure that nothing intercepts the beam and the detector does not over saturate. Do not change the aperture size. Start the reference measurement in the OPUS software measurement menu.
5. For the sample measurement move the metal plate or substrate to position the sample in the optical path again. Start the sample measurement in the OPUS software measurement menu. Then, OPUS calculates the result spectrum automatically by dividing the sample spectrum by the reference spectrum.

### IV. Measurement in Reflectance Mode (thin coatings on metallic substrates)

1. Press the **VIS** button. Put the sample on the stage and adjust the stage height using the focusing control until you can see a sharp image of the sample.
2. Define the measurement area by adjusting the appropriate aperture size.
3. Use the *supplied mirror* for the *reference* measurement. Do not change the aperture size.
4. Adjust the stage height until you see a sharp image of the mirror scratches. If the mirror is free of scratches, use a mirror edge to adjust the focus.
5. Press **IR** button on the control panel.
6. Start the reference measurement in the OPUS software measurement menu.
7. Press the **VIS** button and put the sample in the optical path again.
8. Readjust the stage height until you can see a sharp image of the sample.
9. Press **IR** button on the control panel.
10. Start the sample measurement in the OPUS software measurement menu.